

- Type:** Tension
- Material:** Alloy Steel
- Protection:** IP 67
- Features:** It has high precision, strong capability of overload protection and anti-deflective load Completed hooks and rings are available
- Application:** Special load cell for Crane Scales

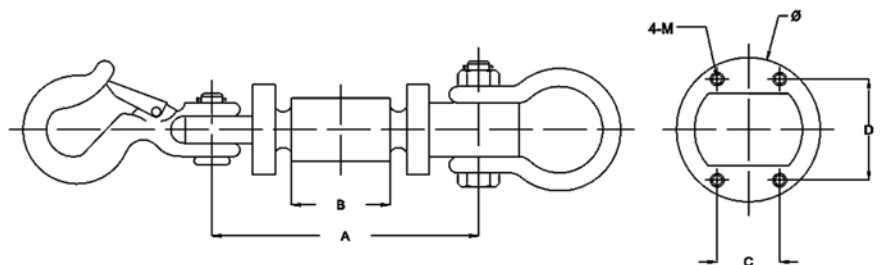
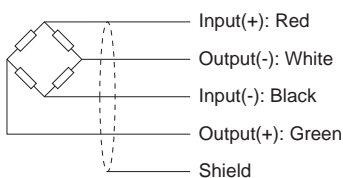


*Specifications:*

Capacity	t	1 / 2 / 3 / 5 / 10
Accuracy Class		C3
Max. Number of Verification Intervals		3000
Minimum Load cell Verification Interval		$E_{max}/7000$
Temperature Effect on Zero	%FS/10°C	$\leq \pm 0.016$
Temperature Effect on Sensitivity	%FS/10°C	$\leq \pm 0.018$
Combined Error	%FS	$\leq \pm 0.023$
Creep Error (30 Minutes)	%FS	$\leq \pm 0.019$
Output Sensitivity	mv/v	$1.20 \pm 0.01$
Input Resistance	$\Omega$	$385 \pm 15$
Output Resistance	$\Omega$	$350 \pm 5$
Insulation Resistance	M $\Omega$	$\geq 5000$
Zero Balance	%FS	1.0
Temperature, Compensated	°C	-10 ~ +50
Temperature, Operating	°C	-20 ~ +60
Excitation, Recommended	v	8 ~ 12(DC)
Safe Overload	%FS	200
Ultimate Overload	%FS	300
Cable	m	10

*Dimensions:*

CAP.(t)	A	B	C	D	$\Phi$	M
1	130	74	16	37	48	M6
2	150	82	22	47	62	M6
3	150	82	22	47	62	M6
5	188	103	28	56	72	M6
10	230	120	28	66	82	M6



All dimensions: mm.